

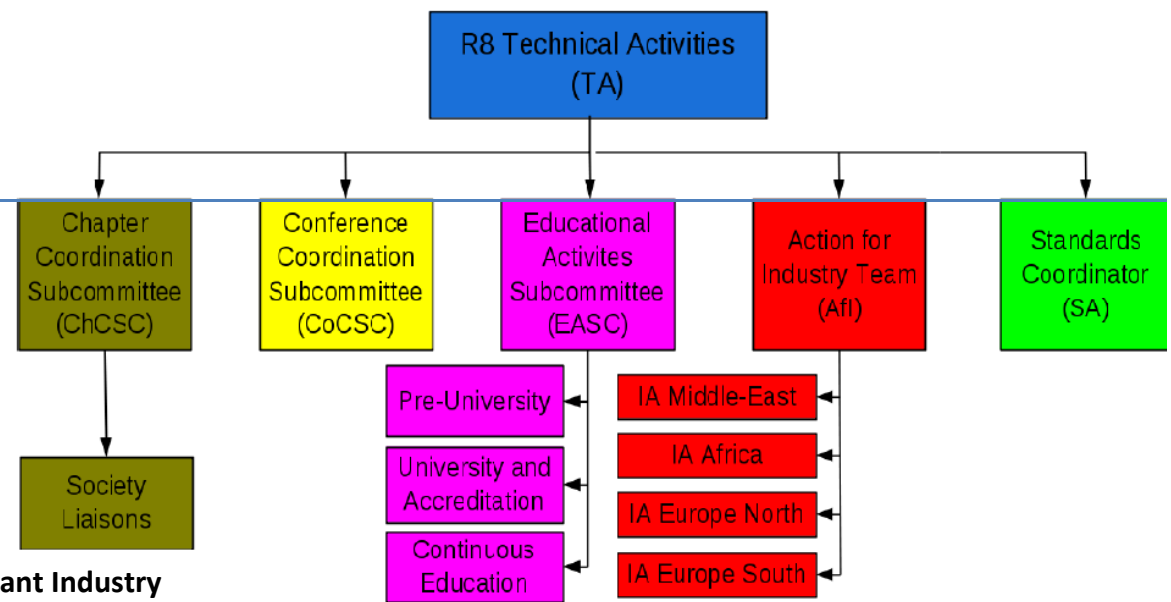
R8 Chapter Coordination Subcommittee 2015-2016

Mission

- **Assist** existing Chapters / SB Chapters and **revitalize** the inactive ones (if possible)
- Provide Conditions for formation of **new** Chapters
- **Collect** and **review** Chapter Award Nominations

Goals

- Ensure the existence of **connection between Chapter and relevant Industry** (A and Ω of Chapter activity – Chapters are the most crucial link between IEEE and Industry)
- Increase presence of some Societies in R8 (Cover member's interest)
- Strengthen connection of **Chapters and Student Branch Chapters** (Bring the kid close to the parent)
- Close collaboration with R8 SAC for student branch chapter matter



Steps to for a new Chapter

- 1) Speak with the Section / Regional Society Coordinator, then the **Chapter Coordination Subcommittee** for expressing intention and ask guidance
- 2) Gather a team of **12 qualified petitioners**
- 3) Fill the **form**
- 4) Sent to **MGA** via email

Steps to for a new Student Branch Chapter

- 1) Speak with **Chapter Coordination Subcommittee** for expressing intention and ask guidance
- 2) Gather a team of **6 petitioners** –Students
- 3) Find a **counselor**
- 4) Fill the **form** (2 minutes)
- 5) Sent to **MGA** via email

Forms: http://www.ieee.org/societies_communities/geo_activities/forms_petitions/forms_petitions_index.html